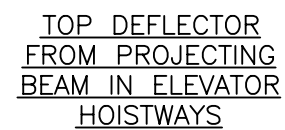
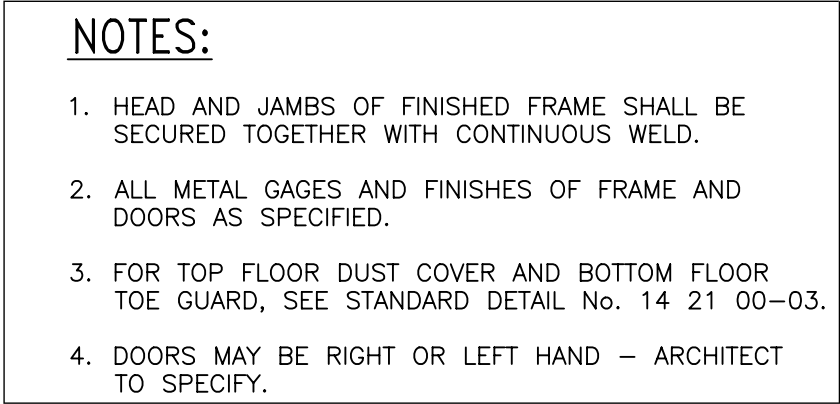


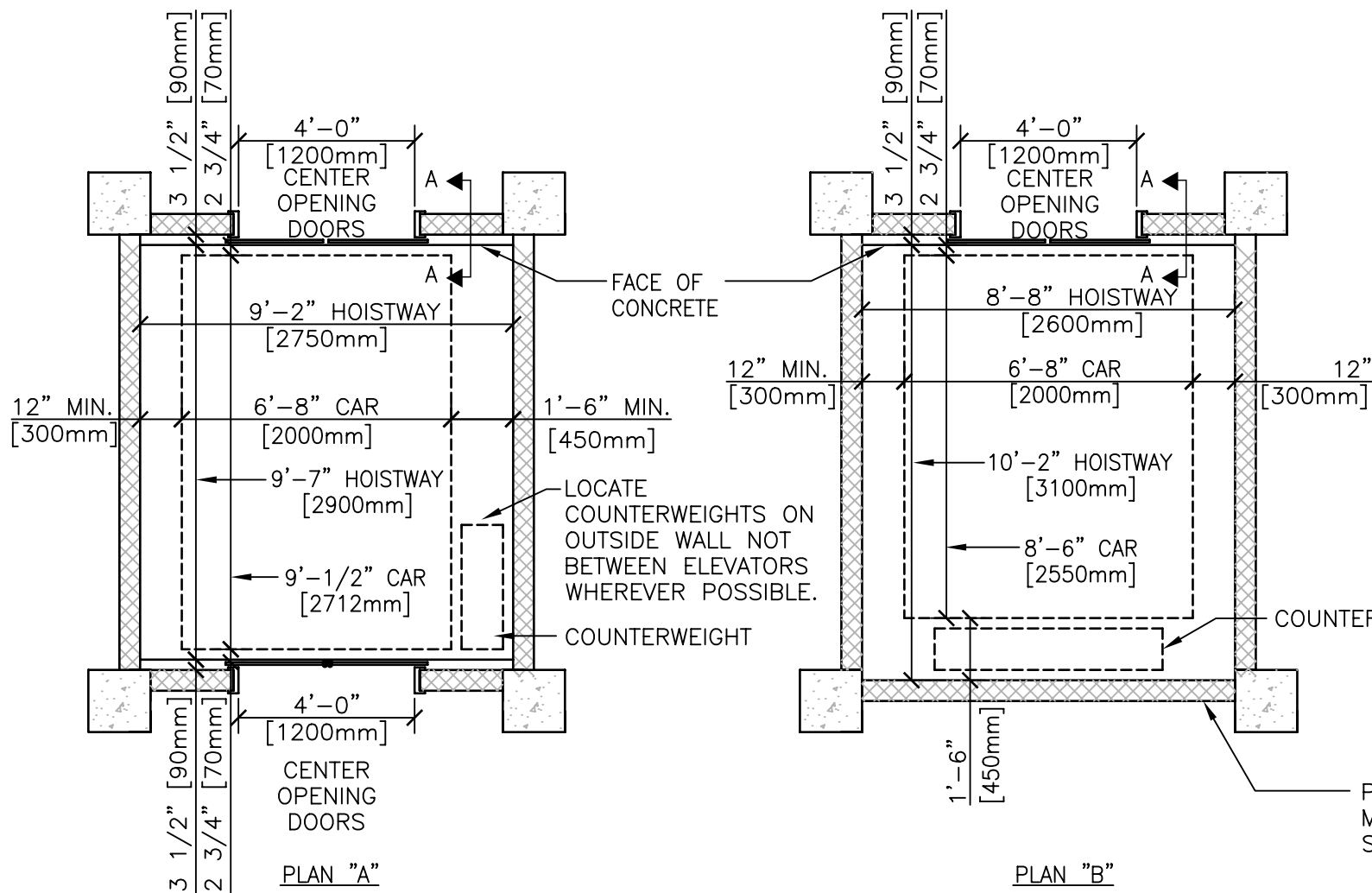


- SECTION "A-A"



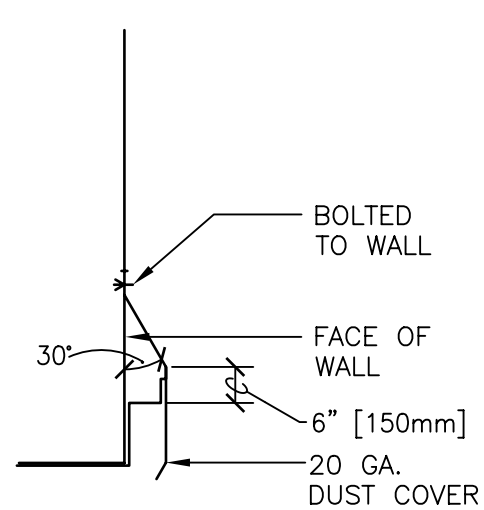


NTS (TWO SPEED SLIDING DOORS)

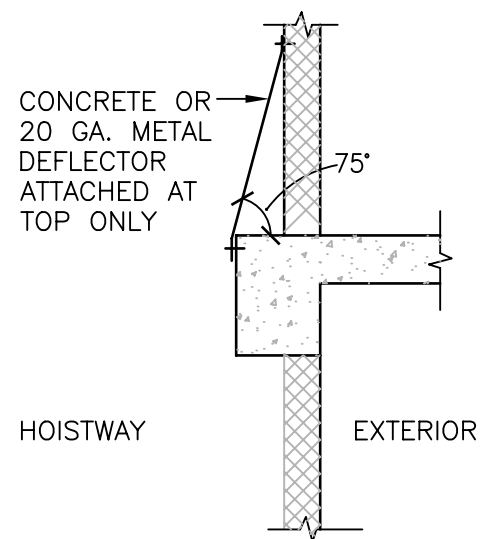


- NOTES:**
1. COORDINATE WALL TYPE AND FINISH WITH ARCHITECTURAL DRAWINGS.
  2. SEE STRUCTURAL DRAWINGS FOR ACTUAL SIZE AND LOCATION OF COLUMNS, BEAMS AND SLABS.
  3. SEE 14 21 00-04.DWG FOR DETAILS OF HORIZONTAL SLIDING CENTER OPENING DOORS.
  4. CONCRETE MACHINE ROOM FLOOR(S) NOT TO BE POURED UNTIL MACHINES ARE ON MACHINE BEAMS.
  5. MACHINE ROOM - APPROXIMATELY 225 SQ. FT. (21 SQ. M) PER MACHINE.
  6. TOP OF MACHINE BEAMS SHALL BE FLUSH WITH OR BELOW MACHINE ROOM FLOOR SLAB.

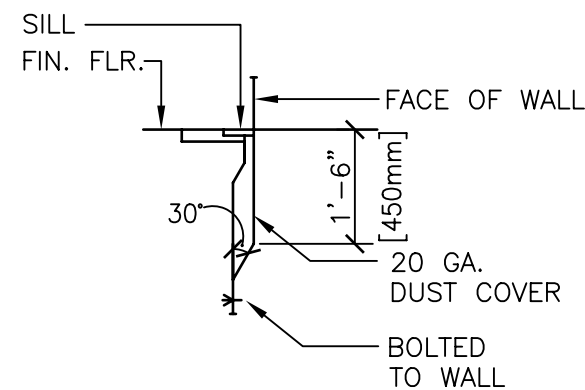
CAR WITH FRONT AND REAR ENTRANCES  
NOTE: AVOID REAR ENTRANCE WHERE POSSIBLE.



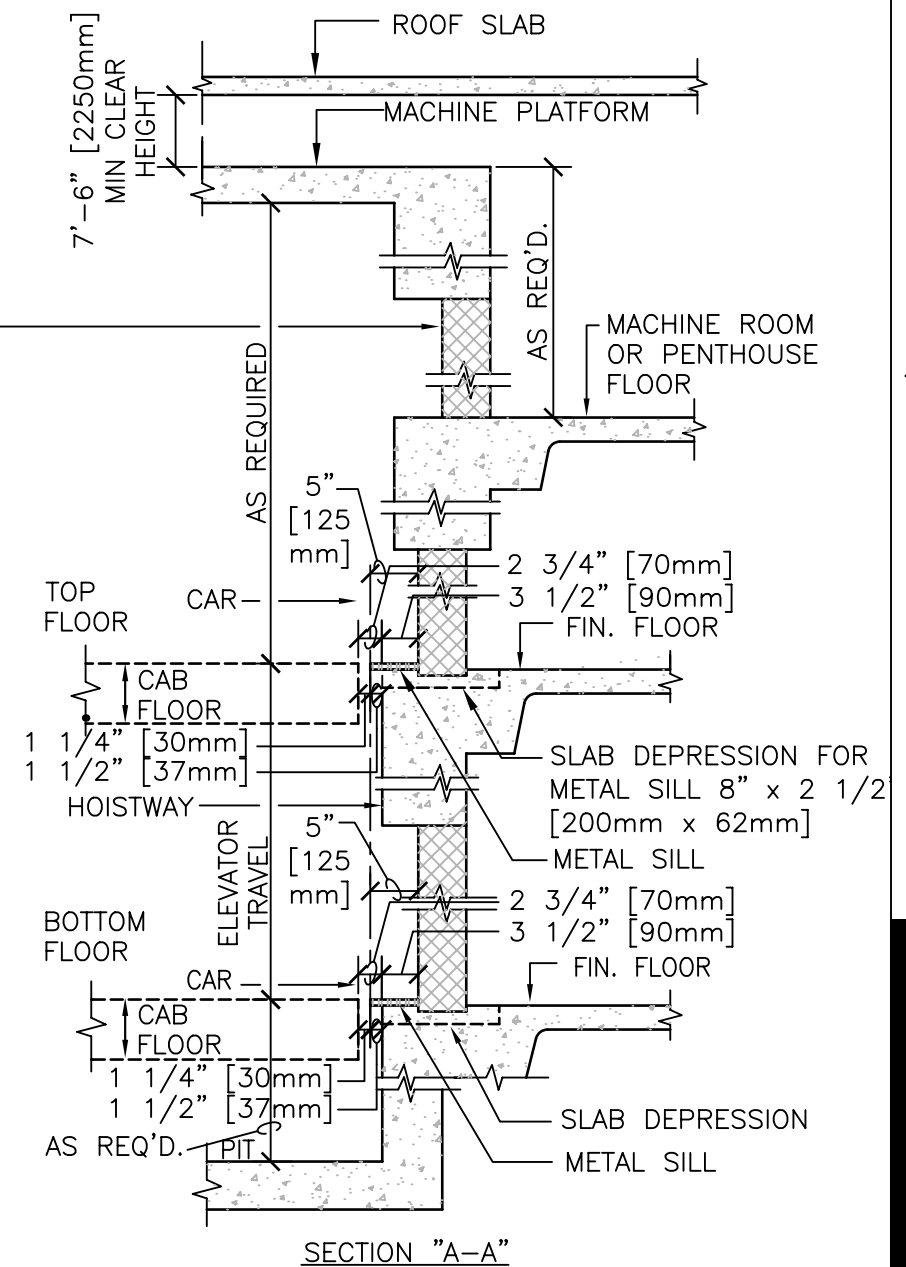
TOP FLOOR-DUST  
COVER AT HEAD



TOP DEFLECTOR  
PROJECTING BEAM  
IN HOISTWAY



BOTTOM FLOOR-  
TOE GUARD AT SILL



DETAIL TITLE / ELEVATOR, SERVICE  
5000 LB. CAPACITY  
(HORIZONTAL SLIDING CENTER OPENING DOORS)

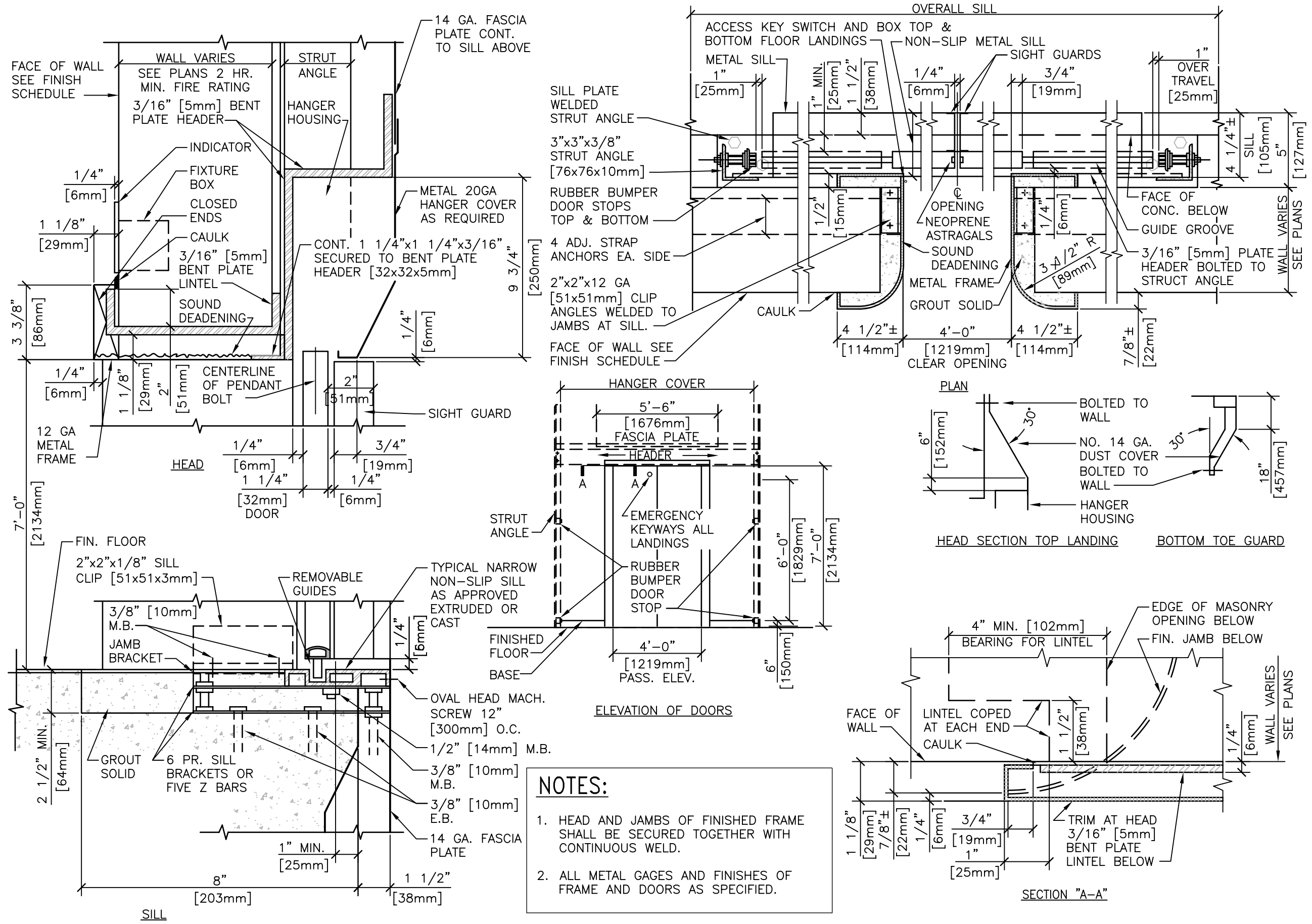
SCALE : NONE

DATE ISSUED :DECEMBER 2008

CADD DETAIL NO. : SD142100-03.DWG

Department of  
Veterans Affairs





- NOTES:**
1. HEAD AND JAMBS OF FINISHED FRAME SHALL BE SECURED TOGETHER WITH CONTINUOUS WELD.
  2. ALL METAL GAGES AND FINISHES OF FRAME AND DOORS AS SPECIFIED.

DETAIL TITLE / ENTRANCE DETAILS  
SERVICE AND PASSENGER ELECTRIC TRACTION OR HYDRAULIC ELEVATOR  
(HORIZONTAL SLIDING CENTER OPENING DOORS)

SCALE : NONE

DATE ISSUED: DECEMBER 2008

CAD DETAIL NO.: SD142100-04.DWG



# ENTRANCE DETAILS - SERVICE AND PASSENGER ELECTRIC TRACTION OR HYDRAULIC ELEVATOR

NTS (HORIZONTAL SLIDING CENTER OPENING DOORS)

SCHEDULE OF APPROXIMATE OVERHEAD HEIGHTS  
AND PIT DEPTHS FOR 4000# [1840 kg]  
CAPACITY PASSENGER ELEVATORS

OVERHEAD MACHINES

SPEEDS FT./MIN. (M/SEC)	TYPE OF MACHINE	DISTANCE FROM TOP OF LANDING TO FINISHED MACHINE ROOM FLOOR OR PLATFORM		DISTANCE FROM TOP OF FINISHED MACHINE ROOM FLOOR TO UNDERSIDE OF SECONDARY SLAB	PITS
		WITHOUT SECONDARY SLAB	WITH SECONDARY SLAB		
100 (0.5)	GEARED	16'-6" [5000mm]			5'-6" [1650mm]
150 (0.8)	GEARED	16'-6" [5000mm]			5'-6" [1650mm]
200 (1.0)	GEARED	16'-6" [5000mm]			5'-6" [1650mm]
250 (1.3)	GEARED	18'-0" [5450mm]			7'-0" [2100mm]
300 (1.5)	GEARED	18'-0" [5450mm]			7'-0" [2100mm]
350 (1.8)	GEARED	18'-6" [5600mm]			7'-0" [2100mm]
400 (2.0)	GEARLESS		24'-3" [7376mm]	6'-3" [1875mm]	8'-8" [2600mm]
450 (2.3)	GEARLESS		24'-3" [7376mm]	6'-3" [1875mm]	8'-8" [2600mm]
500 (2.5)	GEARLESS		25'-3" [7675mm]	6'-3" [1875mm]	10'-0" [3000mm]
600 (3.0)	GEARLESS		27'-0" [8200mm]	6'-3" [1875mm]	12'-6" [3800mm]
700 (3.5)	GEARLESS		28'-0" [8500mm]	6'-3" [1875mm]	12'-6" [3800mm]

CLEAR MACHINE ROOM WITHOUT TROLLEY BEAMS 7'-6" [2250mm] MIN.

CLEAR MACHINE ROOM WITH TROLLEY BEAMS 10'-0" [3000mm] MIN.

NOTES:

- DIMENSIONS ARE FOR PRELIMINARY PLANNING ONLY. ELEVATOR ENGINEER SHOULD BE CONSULTED RELATIVE TO CLEARANCES REQUIRED FOR SPECIFIC PROJECTS.
- GEARLESS HOISTING MACHINES SHALL BE CONSIDERED FOR RISES OF 100 FEET [30480mm] OR MORE.

DETAIL TITLE / ELEVATOR HOISTWAYS  
4000 LB. CAPACITY PASSENGER  
VERTICAL DIMENSIONS

Department of  
Veterans Affairs



SCALE : NONE

DATE ISSUED :FEBRUARY 2008

CADD DETAIL NO. : SD142100-05.DWG

SCHEDULE OF APPROXIMATE  
OVERHEAD HEIGHTS AND PIT DEPTHS  
UP TO 5000# [2268 kg] CAPACITY  
PASSENGER/SERVICE ELEVATORS

OVERHEAD MACHINES

SPEEDS FT./MIN. (M/SEC)	TYPE OF MACHINE	DISTANCE FROM TOP OF LANDING TO FINISHED MACHINE ROOM FLOOR OR PLATFORM		DISTANCE FROM TOP OF FINISHED MACHINE ROOM FLOOR TO UNDERSIDE OF SECONDARY SLAB	PITS
		WITHOUT SECONDARY SLAB	WITH SECONDARY SLAB		
100 (0.5)	GEARED	17'-0" [5150mm]			5'-6" [1650mm]
150 (0.8)	GEARED	17'-6" [5300mm]			5'-6" [1650mm]
200 (1.0)	GEARED	17'-6" [5300mm]			5'-8" [1700mm]
250 (1.3)	GEARED	18'-0" [5450mm]			6'-6" [1950mm]
300 (1.5)	GEARED	18'-0" [5450mm]			6'-6" [1950mm]
350 (1.8)	GEARED	18'-0" [5450mm]			6'-11" [2075mm]
400 (2.0)	GEARLESS		24'-3" [7375mm]	5'-3" [1575mm]	8'-8" [2600mm]
450 (2.3)	GEARLESS		24'-3" [7375mm]	6'-3" [1875mm]	8'-8" [2600mm]
500 (2.5)	GEARLESS		24'-6" [7450mm]	6'-3" [1875mm]	9'-6" [2850mm]
600 (3.0)	GEARLESS		25'-8" [7800mm]	6'-3" [1875mm]	10'-2" [3100mm]
700 (3.5)	GEARLESS		26'-10" [8150mm]	6'-3" [1875mm]	11'-2" [3400mm]

CLEAR MACHINE ROOM 7'-6" [2250mm].

NOTES:

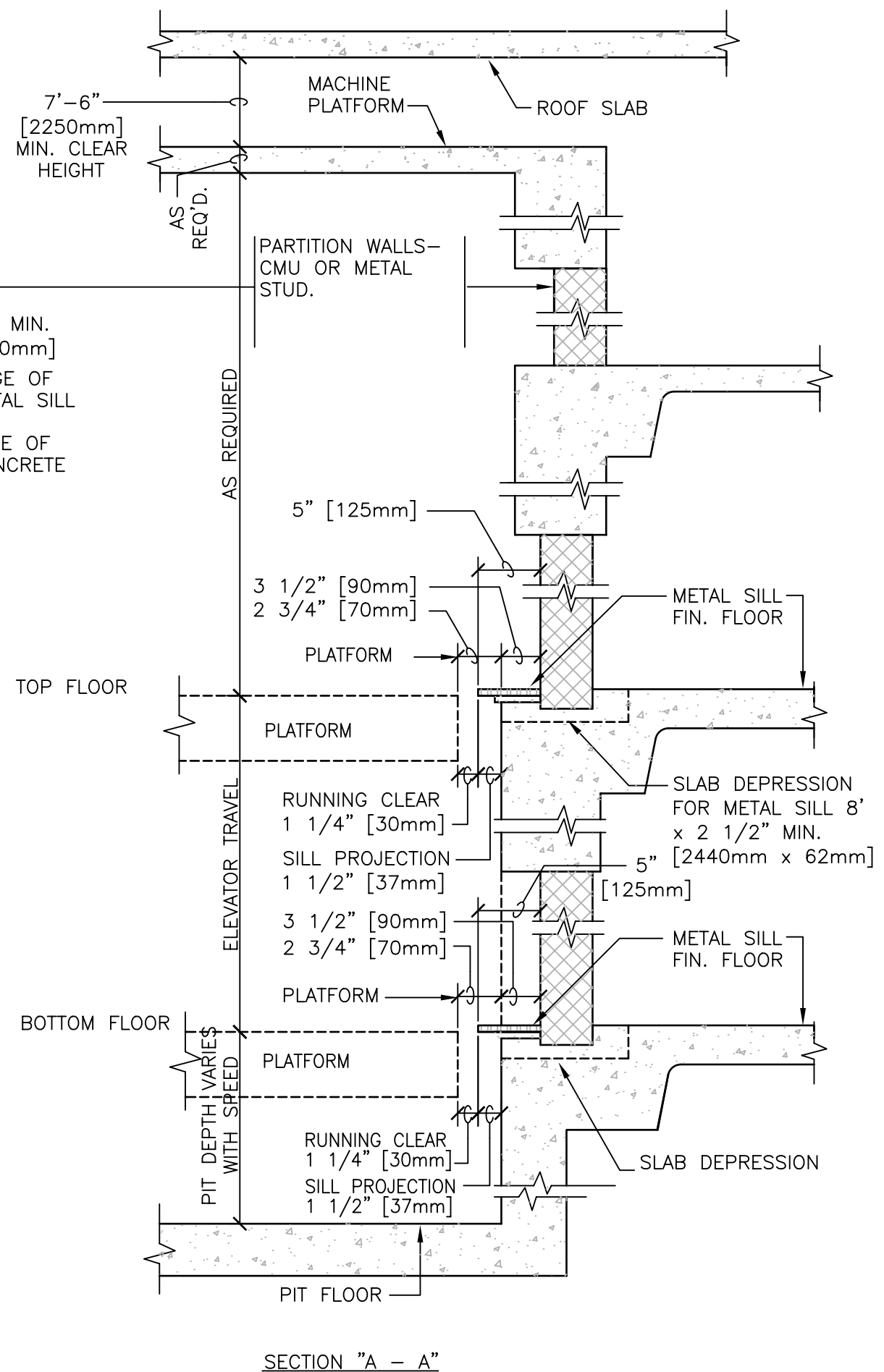
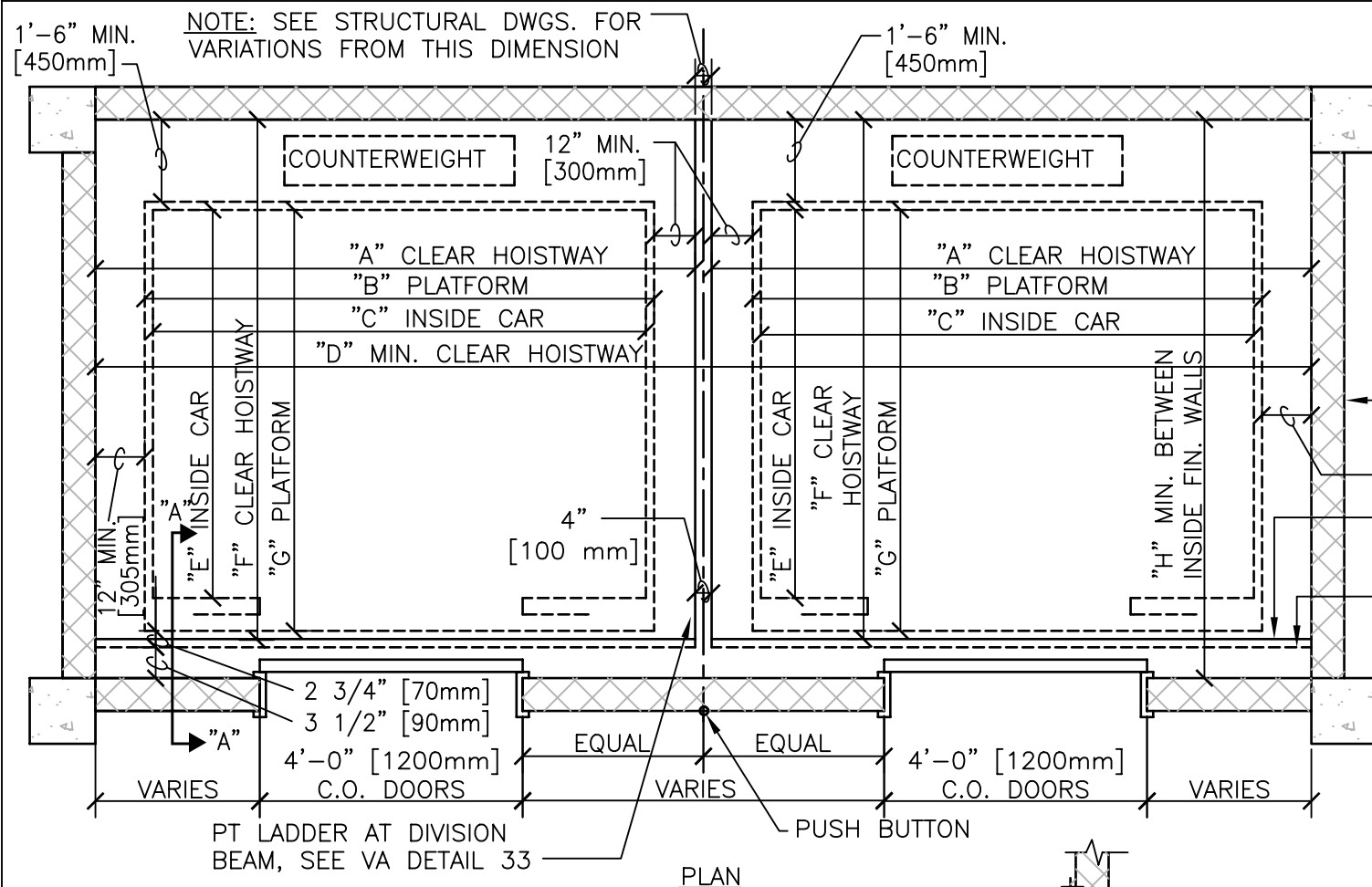
1. DIMENSIONS ARE FOR PRELIMINARY PLANNING ONLY. ELEVATOR ENGINEER SHOULD BE CONSULTED RELATIVE TO CLEARANCES REQUIRED FOR SPECIFIC PROJECTS.
2. GEARLESS HOISTING MACHINES SHALL BE CONSIDERED FOR RISES OF 100 FEET [30480mm] OR MORE.

DETAIL TITLE / ELEVATOR HOISTWAYS 2000 LB. CAPACITY  
PASSENGER/SERVICE ELEVATORS  
VERTICAL DIMENSIONS

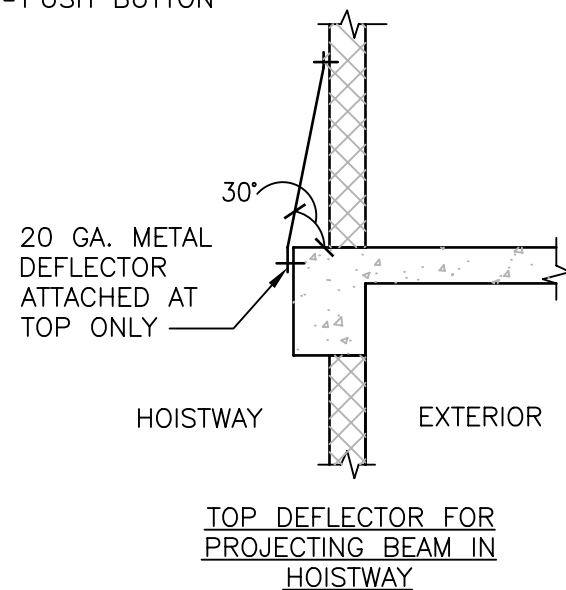
SCALE : NONE

DATE ISSUED :DECEMBER 2008

CADD DETAIL NO. : SD142100-06.DWG



VARIABLE CAR DIMENSIONS		
	3500 LB. CAP. [1580 KG]	4000 LB. CAP. [1814 KG]
A	9'-10" [3000mm]	10'-0" [3050mm]
B	7'-10" [2350mm]	8'-0" [2400mm]
C	7'-6" [2250mm]	7'-8" [2300mm]
D	20'-0" [6000mm]	20'-4" [6200 mm]
E	4'-10 3/4" [1470mm]	5'-3 3/4" [1595mm]
F	7'-5 3/4" [2245mm]	7'-10 3/4" [2405mm]
G	5'-9" [1725mm]	6'-2" [1850mm]
H	7'-9 1/4" [2331mm]	8'-2 1/4" [2456mm]



NOTES:

- COORDINATE WALL TYPE AND FINISH.
- COORDINATE ACTUAL SIZE AND LOCATION OF COLUMNS, BEAMS AND SLAB WITH STRUCTURAL.
- SEE DRAWING NO. 14210-04.DWG FOR ENTRANCE DETAILS.
- CONCRETE FLOOR(S) NOT TO BE POURED UNTIL MACHINES ARE IN PLACE.
- MACHINE ROOM — APPROXIMATELY 225 SQ. FT. (21 SQ. M) PER MACHINE.
- MACHINE BEAMS SHALL BE FLUSH OR BELOW MACHINE.

DETAIL TITLE / PASSENGER ELEVATOR  
HORIZONTAL SLIDING CENTER OPENING DOORS

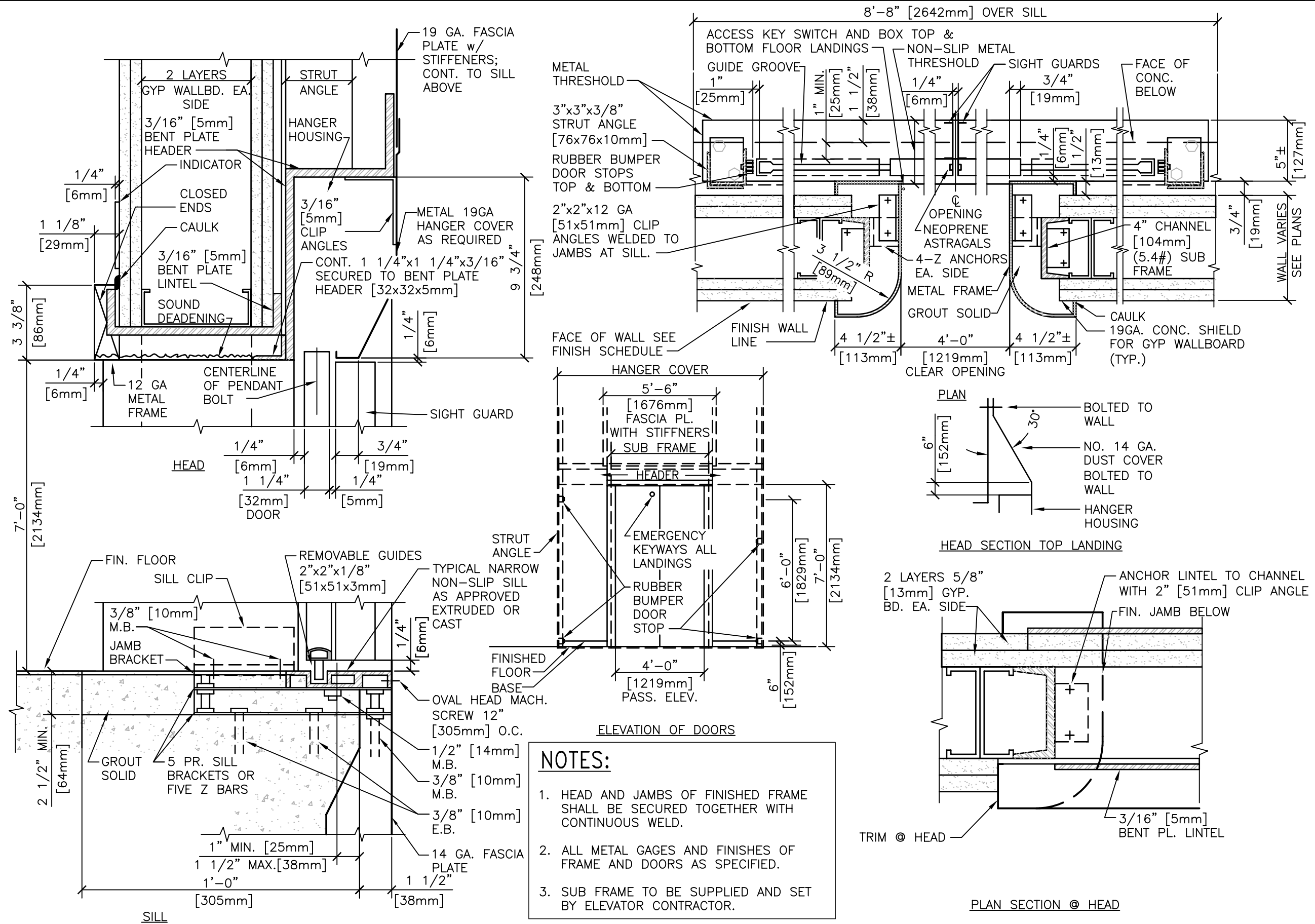
SCALE : NONE

DATE ISSUED :DECEMBER 2008

CADD DETAIL NO. SD142100-07.DWG

Department of  
Veterans Affairs





DETAIL TITLE / ENTRANCE DETAILS  
SERVICE AND PASSENGER ELECTRIC TRACTION OR HYDRAULIC ELEVATOR  
(WITH DRYWALL SHAFT HORIZONTAL SLIDING CENTER OPENING DOORS)

SCALE : NONE

DATE ISSUED: DECEMBER 2008

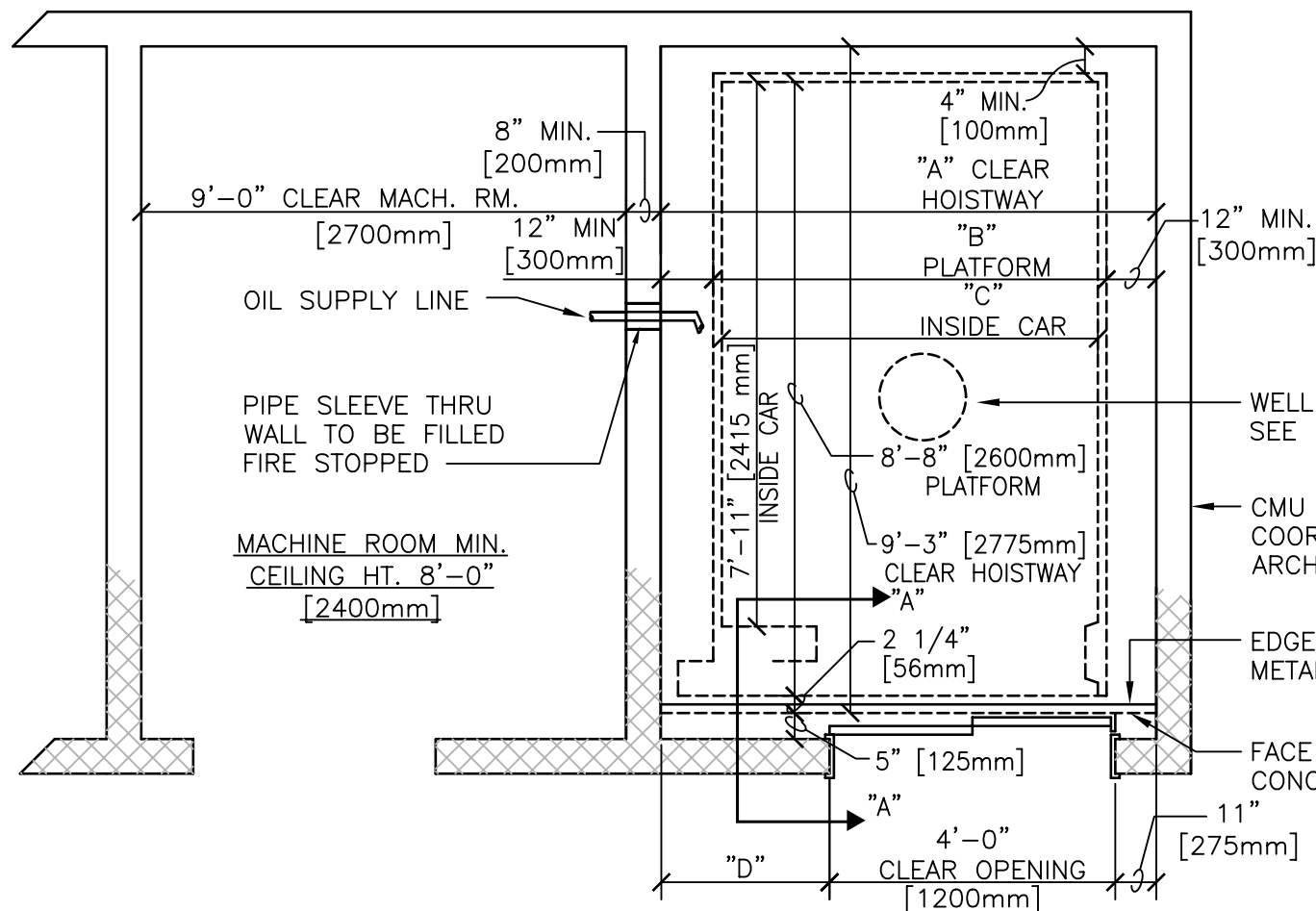
CAD DETAIL NO.: SD142100-08.DWG

Department of  
Veterans Affairs

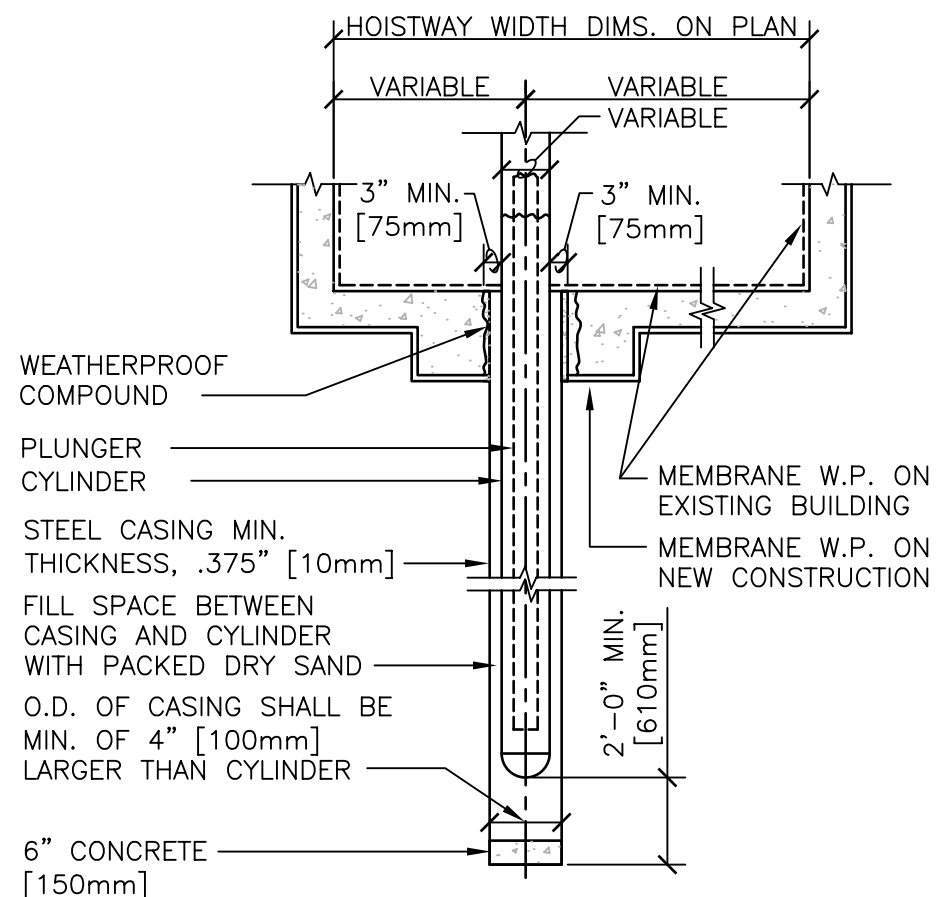


# ENTRANCE DETAILS - SERVICE AND PASSENGER ELECTRIC TRACTION OR HYDRAULIC ELEVATOR

NTS (WITH GYP WALLBD SHAFT HORIZONTAL SLIDING CENTER OPENING DOORS)

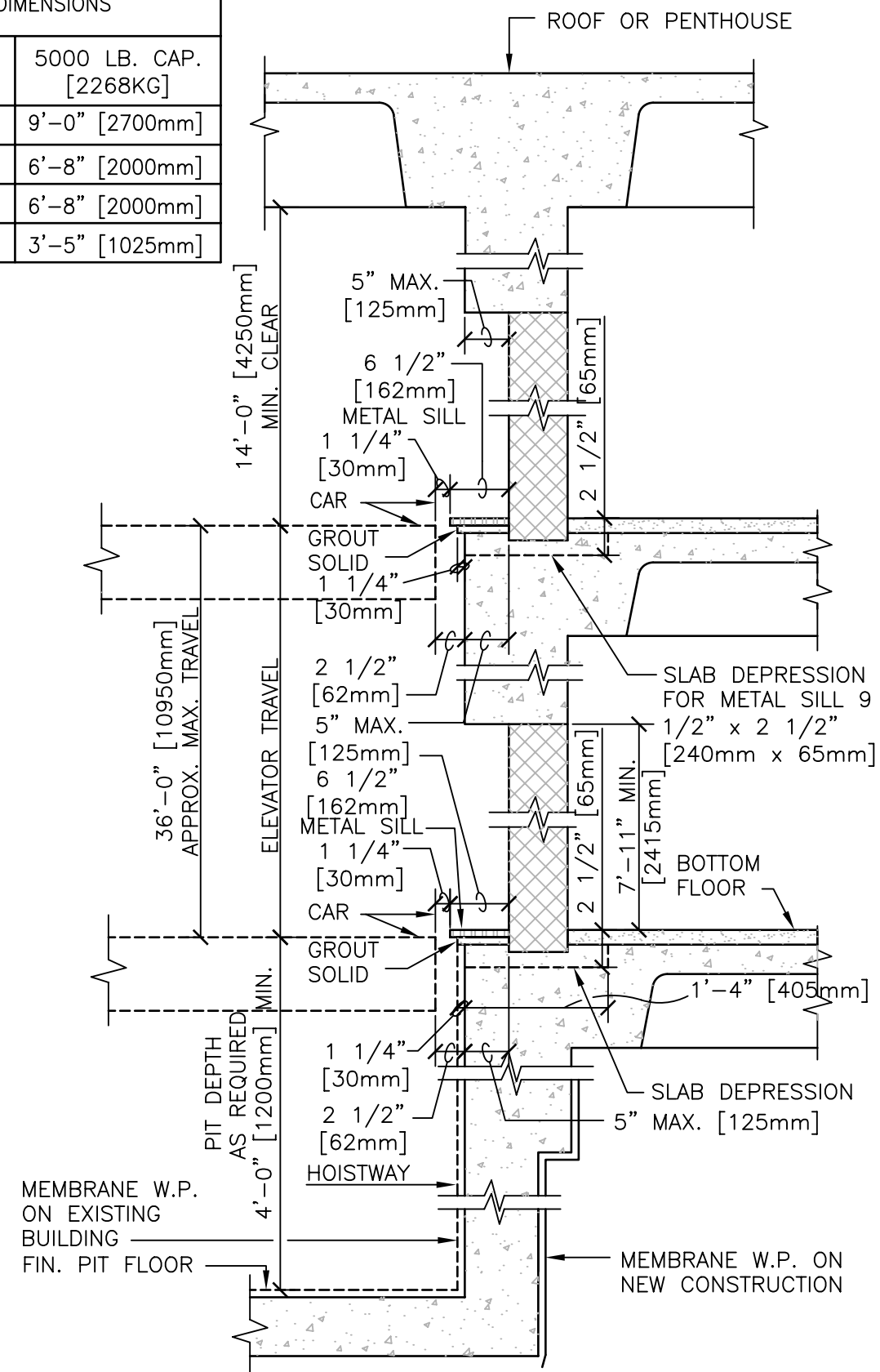


PLAN OF ELEVATOR AT BOTTOM FLOOR



DETAIL OF WELL CASING AND PLUNGER ASSEMBLY

VARIABLE CAR DIMENSIONS		
	4000 LB. CAP. [1814KG]	5000 LB. CAP. [2268KG]
A	8'-2" [2450mm]	9'-0" [2700mm]
B	6'-0" [1800mm]	6'-8" [2000mm]
C	5'-8" [1700mm]	6'-8" [2000mm]
D	2'-7" [775mm]	3'-5" [1025mm]



SECTION "A - A"

DETAIL TITLE / HYDRAULIC ELEVATOR  
PLAN SECTION

Department of  
Veterans Affairs



SCALE : NONE

DATE ISSUED :DECEMBER 2008

CADD DETAIL NO. : SD142400-01.DWG